



www.hidden-and-dangerous.com



A Take2 Company

© 2004 Illusion Softworks. Illusion Softworks, the Illusion Softworks logo and Hidden and Dangerous are trademarks of Illusion Softworks. Global Star, the Global Star logo, Take-Two Interactive Software and A Take2 Company logo are all trademarks and/or registered trademarks of Take-Two Interactive Software. All other marks and trademarks are the property of their respective owners. Uses Bink Video. Copyright © 1997-2004 by RAD Game Tools, Inc. GameSpy and the "Powered by GameSpy" design are trademarks of GameSpy Industries, Inc. Product of United Kingdom. Developed by Illusion Softworks. Published by Global Star. All rights reserved.



Table of Contents

INSTALLATION	2
CONTROLS QUICK GUIDE - DEFAULT SETUP 1	4
CONTROLS QUICK GUIDE - SETUP 2	7
SINGLE PLAYER	10
MULTIPLAYER	11
ADVANCED MULTIPLAYER QUICK REFERENCE GUIDE	12
USING THE TACTICAL MAP	18
APPENDIX: WEAPONS AND UNIFORMS	24
CREDITS	26
TECHNICAL SUPPORT	27
WARRANTY	28
NOTES	31

Installation

To install the game you must have at least an additional 1.2GB free hard disk space on the drive where the original Hidden & Dangerous 2 was installed.

Hidden & Dangerous 2 requires DirectX 9 to be installed in order to run. (You will be prompted to install this after installing the game.)

The game also requires the Hidden & Dangerous 2 Disc 1 to be in the CD ROM (or DVD ROM) drive in order to run.

The supported operating systems are:

- Windows 98, Windows 98 Second Edition, Windows Millennium, Windows 2000 (Professional), Windows XP (Home and Professional)

Hidden & Dangerous 2 does not support:

- Windows 95, Windows NT (any version)

Minimum Hardware Requirements:

- Intel Pentium III/AMD Athlon 1Ghz Processor, 128MB RAM, 3.5GB Hard Drive Space (with H&D2 and H&D2 Sabre Squadron installed), 4x CD/DVD ROM Drive, 32 MB 100% Direct 3D and DirectX 8 Compatible Graphics Card. 100% DirectX 8 Compatible Sound Card, Microsoft Compatible Keyboard and Mouse.

Multiplayer LAN:

- TCP/IP Network.

Multiplayer Internet:

- 56k Modem (Client only)/ISDN/Broadband Connection

Recommended Hardware Requirements:

- Intel Pentium 4/AMD Athlon 2Ghz Processor, 512MB RAM, 3.5GB Hard Drive Space (with H&D2 and H&D2 Sabre Squadron installed), 4x CD/DVD ROM Drive, 128 MB 100% Direct 3D and DirectX 8 Compatible Graphics Card. 100% DirectX 8 Compatible Sound Card, Microsoft Compatible Keyboard and Mouse.

Multiplayer LAN:

- TCP/IP Network.

Multiplayer Internet:

- Broadband Connection

Insert the Hidden & Dangerous 2: Sabre Squadron CD/DVD into your CD ROM (or DVD ROM) drive. The installation menu window will be displayed. Select INSTALL to begin the installation of the game. If AUTOPLAY is disabled on your computer's CD ROM (DVD ROM) drive you will need to run the SETUP.EXE by double clicking the MY COMPUTER icon and then double clicking the CD ROM (DVD ROM) drive icon and then the SETUP.EXE file.

NOTE: Hidden & Dangerous 2: Sabre Squadron will automatically install to the directory where the original Hidden & Dangerous 2 was installed.

To uninstall Hidden & Dangerous 2: Sabre Squadron, select the uninstall option from the Windows Start Menu\Programs\Illusion Softworks\Hidden & Dangerous 2 Sabre Squadron.

NOTE: It is recommended that you run the in-game "Autopatcher" from the Windows Start Menu\Programs\Illusion Softworks\Hidden & Dangerous 2 Sabre Squadron to see if there have been any patches released to upgrade to the latest version of the game. This is important when attempting to join Multiplayer games.

Controls Quick Guide - Default Setup 1

Movement

Command	Default Key
Move Forward	Cursor Up
Move Back	Cursor Down
Strafe Left	Cursor Left
Strafe Right	Cursor Right
Increase Speed	Mouse Wheel Up
Decrease Speed	Mouse Wheel Down
Lean to the Left	Delete
Lean to the Right	Page Down
Jump	J
Climb	Home
Crouch / Stand	Right Ctrl
Lie down	Right Shift

Weapons and Shooting

Command	Default Key
Shooting	Left Mouse Button
Secondary Action	End
Throw Grenade	G
Reload	Enter
Previous Weapon	[
Next Weapon]
Drop Item	Backspace

Additional Controls

Command	Default Key
Action Button	Right Mouse Button
Action Pull Down Menu	Middle Mouse Button
Game Info	S
Tactical Map	Space
Show Player Screen (multiplayer)	P
HUD On / Off	V
Map	M
Inventory	I
Pause	P
Binoculars	B
Camera	C
Console	`
Tell Everybody (multiplayer)	T
Tell the Team (multiplayer)	Y
Hand Brake	Left Alt
Quick Save	F4
Quick Load	F8

Soldier Commands

Command	Default Key
Switch Player	Tab
Select Soldier 1	1
Select Soldier 2	2
Select Soldier 3	3
Select Soldier 4	4
Command All	Number Pad 0
Command Soldier 1	Number Pad 1
Command Soldier 2	Number Pad 2
Command Soldier 3	Number Pad 3
Command Soldier 4	Number Pad 4
Command Soldier 5	Number Pad 5
Command Soldier 6	Number Pad 6

Controls Quick Guide - Setup 2

Tactical Mode

Command	Default Key
Regroup	G
Signal 1	H
Signal 2	J
Stand	D
Crouch	S
Lie Down	A
Sprint	Q
Run	W
Walk	E
Slow	R
Passive	Z
Defensive	X
Aggressive	C
Delete Command	Number Pad 0
Delete All	Number Pad .
Options	Number Pad /
Camera Speed	Number Pad *
Camera Forwards	Cursor Up
Camera Backwards	Cursor Down
Camera Left	Cursor Left
Camera Right	Cursor Right
Camera Up	Page Up
Camera Down	Page Down
Rotate Camera	Left Ctrl (Hold)
Rotate Left	Number Pad 4
Rotate Right	Number Pad 6
Rotate Up	Number Pad 8
Rotate Down	Number Pad 2
Zoom Camera In	Number Pad +
Zoom Camera Out	Number Pad -

Movement

Command	Default Key
Move Forward	W
Move Back	S
Strafe Left	A
Strafe Right	D
Speed Up	Mouse Wheel Up
Speed Down	Mouse Wheel Down
Lean to the Left	Q
Lean to the Right	E
Jump	Middle Mouse Button
Climb	X
Crouch / Stand	Left Shift
Lie Down	Left Ctrl

Weapons and Shooting

Command	Default Key
Shooting	Left Mouse Button
Secondary Action	Right Mouse Button
Throw Grenade	G
Reload	R
Previous Weapon	Z
Next Weapon	Left Alt
Drop Item	Backspace

Additional Controls

Command	Default Key
Action Button.....	Space
Action Pull Down Menu.....	`
Game Info.....	,
Tactical Map.....	Capslock
Show Player Screen (multiplayer).....	P
HUD On / Off.....	V
Map.....	M
Inventory.....	I
Pause.....	P
Binoculars.....	B
Camera.....	C
Console.....	`
Tell Everybody (multiplayer).....	T
Tell the Team (multiplayer).....	Y
Hand Brake.....	Right Alt
Quick Save.....	F4
Quick Load.....	F8

Soldier Commands

Command	Default Key
Switch Player.....	Tab
Select Soldier 1.....	1
Select Soldier 2.....	2
Select Soldier 3.....	3
Select Soldier 4.....	4
Command All.....	Number Pad 0
Command Soldier 1.....	Number Pad 1
Command Soldier 2.....	Number Pad 2
Command Soldier 3.....	Number Pad 3
Command Soldier 4.....	Number Pad 4
Command Soldier 5.....	Number Pad 5
Command Soldier 6.....	Number Pad 6

Tactical Mode

Command	Default Key
Regroup.....	G
Signal 1.....	V
Signal 2.....	B
Stand.....	Q
Crouch.....	W
Lie Down.....	E
Sprint.....	A
Run.....	S
Walk.....	D
Slow.....	F
Passive.....	C
Defensive.....	X
Aggressive.....	Z
Delete Command.....	Backspace
Delete All.....	Delete
Options.....	Number Pad /
Camera Speed.....	Number Pad *
Camera Forwards.....	Cursor Up
Camera Backwards.....	Cursor Down
Camera Left.....	Cursor Left
Camera Right.....	Cursor Right
Camera Up.....	Page Up
Camera Down.....	Page Down
Rotate Camera.....	Left Ctrl (Hold)
Rotate Left.....	Number Pad 4
Rotate Right.....	Number Pad 6
Rotate Up.....	Number Pad 8
Rotate Down.....	Number Pad 2
Zoom Camera In.....	Number Pad +
Zoom Camera Out.....	Number Pad -

Single Player

Hidden & Dangerous 2: Sabre Squadron adds nine new missions split over four campaigns to the existing missions in Hidden & Dangerous 2.

To run the game, select the shortcut to Hidden & Dangerous 2 Sabre Squadron from the Windows Start Menu or double click the desktop shortcut to the game.

NOTE: You must have the original Hidden & Dangerous 2 DISC1 CD in the CD/DVD ROM drive of the PC in order for the game to run.

To play these campaigns, select the Single Player option from the main menu and you will be presented with the new Single Player menu screen.



From here you can select to play the original campaigns or the Sabre Squadron campaigns. The Sabre Squadron campaigns can also be played in Lone Wolf and Carnage modes.

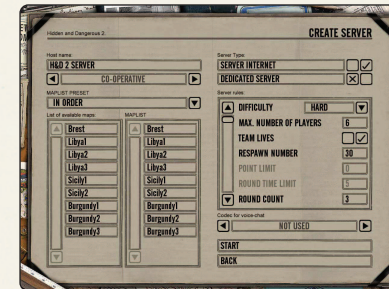
As with the original game, missions that have been completed in either Hidden & Dangerous 2 or Hidden & Dangerous 2 Sabre Squadron will be available to replay again at any time.

Select either Single Mission or Single Mission – Carnage to display a list of those missions that can be replayed.

Multiplayer

Hidden & Dangerous 2: Sabre Squadron contains 3 new maps for the Deathmatch and Occupation modes and 2 new maps for the Objectives mode in Multiplayer.

In addition, all of the nine single player campaign missions can be played cooperatively over a LAN or the Internet with a maximum of six people per team.



To set up a cooperative game, select the maps and the order in which you'd like to play them by double clicking their names. They will be put into your MAPLIST.

There are four additional options that can be configured:

- Difficulty – Select the level of difficulty for the missions.
- Team Lives – If this is selected all of the players will share a pool of lives and, once depleted, the mission will fail.
- Lives – The number of lives that each player or team has to use during the mission.
- Allow Crosshair – The crosshair can be disabled for even more realism.

NOTE: Always be alert and work as a team in order to be victorious.

Hidden & Dangerous 2 and FIREWALLS for Multiplayer Games.

If you wish to play multiplayer games over the Internet and are behind a firewall such as Windows XP Firewall or a firewall on a router please ensure you have opened the following ports:

UDP PORT 11001
UDP PORT 11002
UDP PORT 11003
UDP PORT 11004

Please refer to the firewall or operating system documentation or help files for instructions.

Advanced Multiplayer Quick Reference Guide

Hidden & Dangerous 2 can be run from the DOS command line and from the games dedicated console command window. Examples of command line execution are: (Note, do not included the " " symbols when entering commands).

"hd2.exe -c"

Activates the H&D 2 command console window. Alternatively, double click the HD2DS_SabreSquadron.exe file in the root of where the game was installed.

"hd2.exe -cmd -exec runserver.txt"

Activates the H&D 2 command console and executes commands from the file runserver.txt (or any text file containing H&D 2 commands).

"hd2.exe -cmd -sessionname testgame -style deathmatch -mapname normandy3 -dedicated 1 -server"

Activates the application and executes the game settings specified (see table on pages 14-16).

NOTE: The syntax the game uses is "hd2.exe -cmd [-command parameter] [-command parameter]".

The Exec Command

The exec command can be used for executing game settings contained in a text file, which is quicker than manually typing them into a command line each time.

Assume that you have created two text files in the root of where you installed Hidden & Dangerous 2:

serveroccupation.txt

serverobjectives.txt

With the content:

sessionname testserver
style occupation
mapname normandy3
mapname africa3
domain internet
dedicated 1
server

With the content:

sessionname testserver
style objectives
mapname africa3
mapname normandy1
domain internet
dedicated 1
server

NOTE: When entering the list of commands there has to be an empty line below the last command. In this case that means pressing enter after typing "server".

There are two ways to create the server using either file.

Open the multiplayer dedicated multiplayer console window by typing "hd2.exe -c" in the DOS command line.

Then type "exec serverobjectives.txt" or "exec serveroccupation.txt" to start the preferred game server.

Alternatively, execute the batch file without opening the dedicated multiplayer console window by typing "hd2.exe -cmd -exec serverobjectives.txt" into the command line.

NOTE: After running "hd2.exe -c" to open the dedicated multiplayer console or double clicking the HD2DS_SabreSquadron.exe, use the "listmaps" command to display the name of the multiplayer maps in the form that must be typed when entering commands or creating a file containing a list of commands (see table on pages 14-16).

Parameter	Comment	Variables	Example
maxclients	Sets the maximum number of players that can be in a game.	integral number	maxclients 10
pointlimit	Sets the point limit for ending each round.	integral number	pointlimit 30
roundlimit	Sets the time limit for ending each round [in minutes].	integral number	roundlimit 5
roundcount	Sets the number of rounds before loading the next map.	integral number	roundcount 3
warmup	Sets the warmup time [in seconds].	integral number	warmup 10
respawntime	Sets the time limit for respawn [in seconds]. The countdown in deathmatch mode is individual. In other modes, players are respawned in batches.	integral number	respawntime 10
allowrespawn	This command will allow respawning.	0 - not allowed, 1 -allowed	allowrespawn 1
friendlyfire	Sets whether team- killing is on or off.	0 - not allowed, 1 -allowed	friendlyfire 0
autoteambalance	Sets automatic teambalance.	0 - not allowed, 1 -allowed	autoteambalance 1
spawnprotection	Sets the time limit in which the newly respawned player is invulnerable but cannot shoot.	integral number	spawnprotection 5
3rdpersonview	Sets whether 3rd person view is on or off.	0 - not allowed, 1 -allowed	3rdpersonview 1
inversedamage	Sets the amount of injury caused to the player when a team member is shot [in percent].	integral number	inversedamage 200
fallingdmg	Sets whether falling causes injury.	0 - not allowed, 1 -allowed	fallingdmg 1
allowvehicles	Sets whether vehicles can be used on a map.	0 - not allowed, 1 -allowed	allowvehicles 1
maxping	Sets maximum ping allowed on server.	integral number	maxping 300

Parameter	Comment	Variables	Example
autorestart	Automatically restarts server if it crashes.	0 - not allowed, 1 -allowed	autorestart 1
maxfreq	Dedicated servers internal maximum frequency.	integral number	maxfreq 50
voicechat	This command will create a server with voice chat support.	0 - not allowed, 1 -allowed	voicechat 0
mapname	This command will add selected maps to the maplist. In order to be successfully added, the map has to be created in the specified gamestyle.	name of the file directory in which the map is located	mapname normandy3_mp_zone
style	This command will define the gamestyle. It has to be set before adding maps to the maplist.	deathmatch or occupation or objectives	style deathmatch
domain	Sets either internet or LAN game.	local or internet	domain internet
sessionname	Sets the name of the game.	string	sessionname TestGame
help	This command will list all commands		help
exec	This command will execute a batch file with a list of commands.	file name string	exec runserver.txt
server	Creates a game server.		server
dedicated	Sets the server as dedicated. Note: Dedicated servers can only host a game, it is not possible to play on them.	0 - not allowed, 1 - allowed	dedicated 1
join	Connects the computer to the specified game server.	server IP address string	join 198.235.12.65
password	Sets the password that is required to join the game	string	password hd2
adminpass	Set the administrator password.	string	adminpass hd2admin
adminlogin	Login as admin to the server.	string	adminlogin hd2admin
svcmd	Remote execution of the command on the server.	string	svcmd nextmap

In addition, commands can also be given during multiplayer games by using the in-game console. You can access the console by pressing the tilde (~) key next to the 1 on the keyboard. Press the ENTER key after entering the command to activate.

Parameter	Comment	Variables	Example
listmaps	This will display a list of all of the available map names.		listmaps
say	Send a message to all players in the game.	string	say hello
sayteam	Send a message to players on your team only.	string	sayteam hi
asay	Send a message to all players in the game from the administrator.	string	server restarting
vote	This command will initialize a vote. It is possible to vote for variable game settings.	name of command followed by its variable parameter	vote roundcount 10
voteyes	This command will express a positive vote [YES].		voteyes
listplayers	This command will list all players connected to the server, including their reference numbers.		listplayers
kickplayer	This command will kick a player from the game.	player name string or his index	kickplayer 10
nextmap	This command will start a new round with the next map in the list		nextmap
removemap	This command will remove map from your current mapselection list	string	removemap sicily2
restart	This command will reinitialize the actual round.		restart
port	This command will set the communication port; the specified port and the port with the number + 1 will be used. Note: The protocol is UDP/IP	integral number	port 12000 (that means 12000 and 12001 will be used)
quit	This command will terminate the console of a dedicated server.		quit

Voting

Voting can be initiated by the server or by clients; the following settings can be voted on:

restart
nextmap
kickplayer

Voting consists of "vote" + "command" + "parameters", for example: vote respawnntime 10

After this has been typed "respawntime 10 – voting initialised" will be displayed on all machines and players have 15 seconds to type "voteyes" if they agree. If more than half of the players vote YES the changes will be made on the server.

Only one voting session can take place at any one time, so until the 15 seconds have elapsed for voting on "respawntime 10" a new vote cannot be started.

NOTE: Should the game be updated in the future, always read the README contained in the update for further multiplayer commands or changes.

Using The Tactical Map

The tactical map is an incredible asset to those players who wish to play Hidden & Dangerous 2 more strategically without controlling their squad members directly.

The most common reasons for making use of the tactical map interface for controlling your squad:

- To survey the battlefield and plan strategies.
- To pause the action when unexpected events occur and adjust your strategy accordingly.
- To move your squad over long distances and establish offensive or defensive positions.
- To Issue a complex series of commands.
- To precisely coordinate and execute ambushes using the signal 1 and 2 commands.
- To spot enemy positions within your line of sight.

Please refer to the Tactical Squad Management section of the Hidden & Dangerous 2 manual for a complete description of the controls and icon functions.

Below is an example of the how the tactical map can be used:

Figure 1:

After starting a mission press SPACE (default) to pause the game and go into the tactical map mode. From here you have complete freedom to view the mission area and start to plan out your strategy according to the mission objectives.

NOTE: Enemy units will only appear on the map if they are within any of your soldier's line of sight.

In the example below you can see that by navigating the map, five key elements have been noted.

1. A hilltop PAK40 cannon has been located.
2. A German sniper has been spotted.
3. Explosives that have been primed to explode have been located.
4. A manned allied machine gun emplacement to provide cover for your squad.
5. The members of your four-man squad at the start of the mission.

Figure 1:



Figure 2:

After establishing the lay of the land you should then issue orders to each member of your squad by adjusting his status with the command icons and then right clicking in the environment to set his waypoints.

Any order or soldier's status can be changed at any time by clicking on the waypoint and changing the commands.

After setting all of the commands you can either press SPACE to return to the game or click the stopwatch command icon to switch to real time and watch the action play out in the tactical map interface. You will also still retain control of the camera and will be able to move it freely to watch your battlefield strategy unfold.

In this example you can see:

1. I've chosen to move my sniper to support an allied soldier and then moved the camera nearer to an enemy sniper, clicked on him with the right mouse button and selected "kill". The sniper will move to this position and carry out this order.
2. I've ordered a second soldier to man the cannon by right clicking it and selecting "use" to set the waypoint.
3. Here a waypoint has been set to move my soldier forward and end up behind cover.
4. Finally, by switching to real time I can watch my squad carry out their orders.

Figure 2:

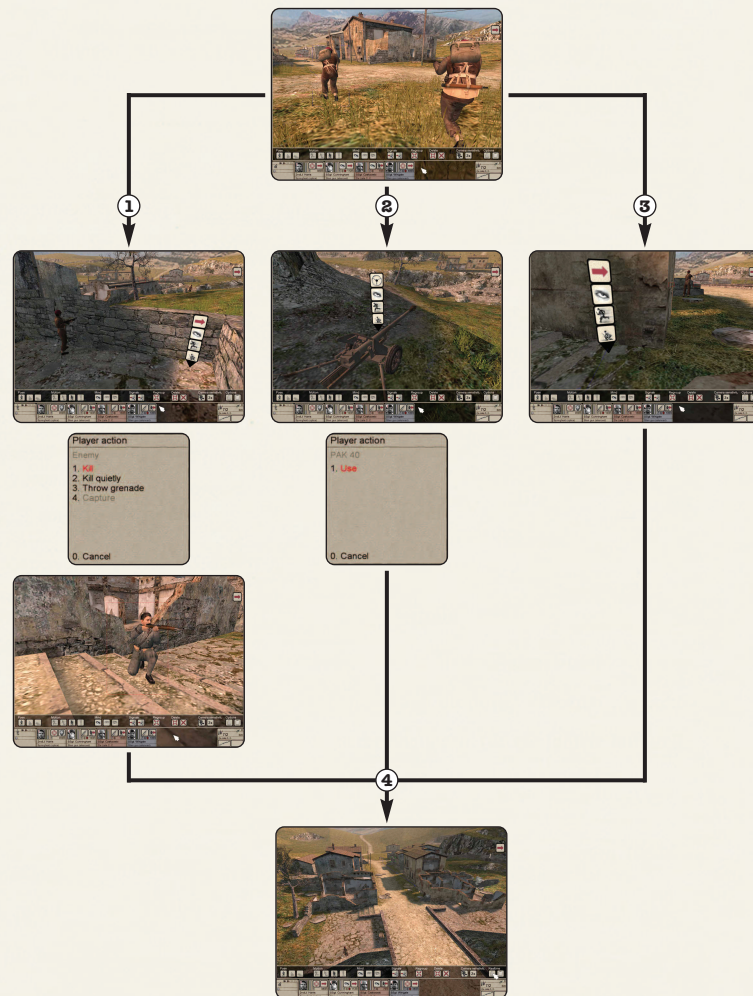


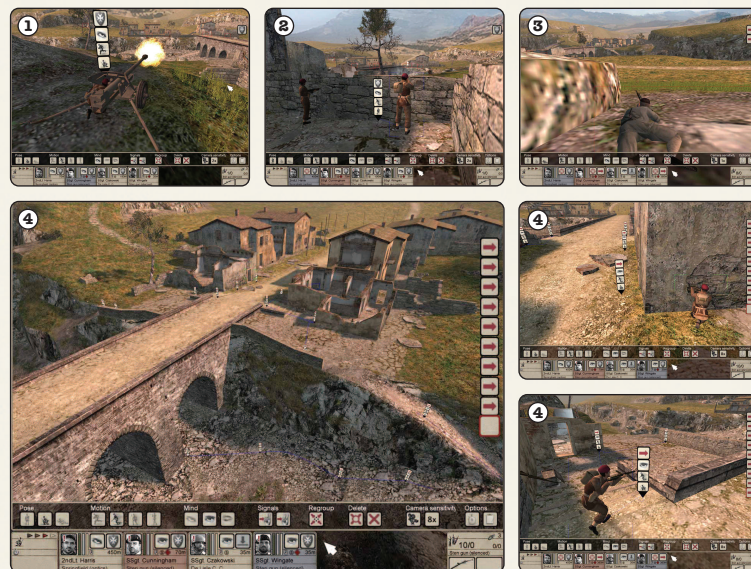
Figure 3:

Now that I have established defensive positions by manning the cannon and positioning the sniper for support, the remaining members of my squad can now be issued orders to move forward to engage the enemy and concentrate on completing the mission objectives.

Remember that enemies will only be visible to you if they are within one of your team member's line of sight. Therefore, place troops armed with weapons that have sights in good locations and take advantage of high ground.

1. The manned cannon providing artillery support.
2. A sniper in position to cover the battlefield and act as a spotter.
3. Remember that if your soldier sees an enemy in his sights he will be visible to you in the tactical map.
4. By setting up to ten commands the other members of the squad are ordered to advance whilst staying close to cover and adopting a defensive status so that they will only engage the enemy if they themselves come under fire so that they get to the final waypoint as quickly and safely as possible. Here, ten different commands are set up.

Figure 3:



Appendix

Weapons

RPzB 43



Country.....Germany
 Weight.....13,1kg
 Caliber.....8,8cm
 Shot speed.....N/A



Date.....1943
 Range.....20m
 Magazine.....1
 Type.....Heavy Weapon

MAS Mle.1936



Country.....France
 Weight.....3,75kg
 Caliber.....7,5mm
 Shot speed.....747m/s



Date.....1936
 Range.....500yards
 Magazine.....5
 Type.....Rifle

Gewehr 43



Country.....Germany
 Weight.....4,4kg
 Caliber.....7,93mm
 Shot speed.....776m/s



Date.....1943
 Range.....500yards
 Magazine.....10
 Type.....Rifle

Parabellum silencer



Country.....Germany
 Weight.....1005g
 Caliber.....9mm
 Shot speed.....351m/s



Date.....1906
 Range.....50-55 yards
 Magazine.....8
 Type.....Pistol

Flare Gun



Country.....England
 Weight.....950g
 Caliber.....N/A
 Shot speed.....N/A



Date.....1936
 Range.....300 yards
 Magazine.....1
 Type.....Pistol

PAK40 Cannon



Homing Device Equipment



Code Tables



Uniforms

Guerrilla Fighter 1



Guerrilla Fighter 2



French Resistance Fighter 1



French Resistance Fighter 2



Italian Soldier



Italian Helmet



Italian Officer



Italian Officers Cap



German Soldier



Civilian Clothes



Turban



Credits

ILLUSION SOFTWARES

Development Director:
Petr Vochozka

Producer:
Lukáš Kuře
Petr Mikša

Team Leader:
Alexander Sila

Lead Artist:
Radek Marek

Lead Programmer:
Marek Rabas

Lead Designer:
Radek Havlíček

Lead Animator:
Aleš Filka

Lead Engine Director:
Denis Černý

Lead Tester:
Vladimír Nečas

Game Programming:
Miroslav Ondruš
Marek Rabas
Rastislav Alexovič
Pavel Domsa
Tomáš Štěpánek
Martin Fedor

Engine Programming:
Radek Ševčík
Tomáš Blaho
Pavel Dlouhý

Additional Programming:
Václav Král
Daniel Capek
Dan Doležel
Jiří Pop

3d Artists:
Peter Kubek
Radek Marek
Michal Kubek
Ludek Farda

2d Artists:
Martin Beneš
Pavel Grim
Radek Marek
Michal Kubek

Level Design And Scripting:
Radek Havlíček
Michal Axmann
Roman Kučera
Juraj Bočinec
Martin Babarik

Multiplayer Maps Design:
Radek Marek
Zdeněk Sašek
Martin Kozák
Pavel Jelínek

Singleplayer Maps Design:
Peter Kubek
Radek Marek
Ludek Farda

Ingame Cut-scenes:
Peter Kubek
Tomáš Opluštil
Aleš Filka
Alexander Sila

Ingame Animations:
Tomáš Opluštil
Aleš Filka
Alexander Sila

Motion Capture:
Aleš Filka
Alexander Sila

Pre-rendered Animations:
Alexander Sila

Animated Textures:
Alexander Sila

First Person View
Animations:
Alexander Sila

Special Effects:
Michal Kubek

Motion Capture Operator:
Aleš Filka

Motion Capture Bestboy:
Jan Kittler

Characters Design:
Martin Beneš
Martin Babarik

Dialogs:
Martin Babarik

Ingame Text:
Martin Babarik

Music Composer:
Michal Szlavik
Martin Beneš

Sound Engineer:
Michal Chovanec
Martin Beneš

Testers:
Vladimír Nečas
Jiří Matouš
Jan Kittler
Daniel Knbl
Martin Faltýnek
Jaroslav Ošička

Weapons Consultants:
Vilém Fancev
Jan Skramoušský

Historical Consultant:
PhDr. Daniel Kamas
aka Danny

TAKE 2 PRODUCTION

Producer:
Andy Morley

Executive Producer:
Rupert Easterbrook

Development Director:
Luke Vernon

EUROPEAN TEAM

Gary Lewis
Serhad Koro
Anthony Dodd
Sarah Seaby
Fernando Melo
Jon Broadbridge
Scott Morrow
Heloise Williams
Karl Unterholzner
Jaz Bansi
Richard Barnes
Matthias Wehner
Andreas Traxler
Markus Wilding
Louise Malouf
Simon Ramsey
Leigh Harris
Warner Guinée
Onno Bos
Elena Morlacchi
Giovanni Oldani
Sylvie Barret
Monica Puricelli
Cristiana Colombo
Raquel Garcia
Ana Lafuente
Francisco Diaz
Jason Garcia
Katherine Terry
Jonnie Bryant
Adrian Lawton
Nasko Fejza
Veronique Lallier
Marie Brancellec
Emmanuel Tramblais
Matthias Bellone

TAKE 2 NY

Terry Donovan
Jamie King
Gary Foreman
Jennifer Kolbe
Christoph Hartmann
Susan Lewis
Jeff Castaneda
Tony King
Andrea Borzuku
Hosi Simon
Daniel Einzig
Mayumi Kobayashi
Matt Schlosberg
Jason Bergman
Roozbeh Ashtyani
Phil Mickelson
Sandeep Bisla
Marlene Yamaguchi
Richard Kruger
Gabriel Abarcas
Alice Chuang

VOICE TALENT (UK)

Recorded at SideUK Ltd.

Voice Casting:
Andy Emery

Voice Director:
Jon Ashley

Sound Engineers:
Steve Parker
Ant Hales

Recording Supervision:
Martin Babarik aka Ammo
Andy Morley

Actors:
Jim Clarkson
Tom Oldham
Nigel Lindsay
Tom Goodman Hill
Jonathan Kydd
Stefan Boje
Peter Dickson

MANUAL

Andy Morley

LINCOLN QA

QA Manager:
Mark Lloyd

Lead Tester:
Andy Mason

Testers:
Jon Gittus
Simon Lawrence
Carl Young
Sergio Russo
Andre Mountain
Antoine Cabrol
Jon Ealam
Will Riggott
Jon Atkin-Day
Lee Johnson
Kevin Hobson
Mike Blackburn
Charlie Kinloch
Mike Emery
Phil Alexander
Tim Bates
Phil Deane
Matt Hewitt
Steve McGagh
Steve Bell
Eddie Gibson
James Cree
Dave Lawrence
Matt Lunn
Stefano Moretti
(Localisation & tester)
Dan Goddard
Joby Luckett
Dominic Garcia
(Localisation)
Chris Welsh
(Localisation)

Technical Support

Every effort has been made to make our products as compatible with current hardware as possible. However if you are experiencing problems with running of one of our titles you may contact our Technical Support staff in one of several ways:

Before contacting Technical Support, please be prepared. In order to assist you as efficiently as possible, we will need to know as much information about your computer and the problem as possible. If you cannot provide the information in the checklist below, then please contact your computer manufacturers technical support department before contacting Take 2 Interactive, otherwise we will be unable to solve your problem.

The information that we will require is as follows:

Contact Details

- Your name
- e-mail address, daytime telephone number or postal address
- If you are from outside the UK, please specify which country you are contacting us from and which language version of the game you are playing.

System Details

- PC Brand Name and model
- Processor speed and manufacturer
- CD-ROM Drive speed and manufacturer
- Total amount of system RAM
- The make and model of your Video Card / 3D Accelerator together with amount of Video RAM
- The make and model of your Sound Card
- Mouse and driver information
- Version of DirectX installed on your system

A very useful feature of DirectX is "DXDIAG", the DirectX Diagnostic Tool. It will show you a lot of information about your hardware as well as provide detailed information about your hardware to Take2 Support.

- Click the Start Button on the Task Bar
- Select Run
- Type DXDIAG and press OK.
- A new window will be displayed called "DirectX Diagnostic Tool." It may take a few minutes for DXDIAG to gather information from your computer, so be patient.

Please describe the circumstances, including any error messages, of your problem as clearly as possible.

NOTE : PLEASE DO NOT CONTACT TAKE 2'S TECHNICAL SUPPORT STAFF IN SEARCH OF GAME HINTS. They are neither permitted nor qualified to supply such information.

OUR TECHNICAL SUPPORT CONTACT DETAILS

Post: Take 2 Interactive Technical Support
Unit A, Sovereign Park
Brenda Road
Hartlepool
TS25 1NN

Telephone: (0870) 1242222 / calls charged at the UK national rate
(7 days a week from 8am to 10pm (GMT) excluding bank holidays)
Nederland 0900-2040404 (EUR 0,70ct p/m)
België 0902-88079 (EUR 0,74ct p/m)

Fax: (01429) 233677

e-mail: take2@europeusupport.com
tech.support@take2europe.com

Web Site: www.take2games.co.uk

Warranty

LIMITED SOFTWARE WARRANTY AND LICENSE AGREEMENT

This LIMITED SOFTWARE WARRANTY AND LICENSE AGREEMENT (this "Agreement"), including the Limited Warranty and other special provisions, is a legal agreement between You (either an individual or an entity) and Take 2 Interactive Software (the "Owner") regarding this software product and the materials contained therein and related thereto. Your act of installing and/or otherwise using the software constitutes Your agreement to be bound by the terms of this Agreement. If you do not agree to the terms of this Agreement, promptly return the software packaging and the accompanying materials (including any hardware, manuals, other written materials and packaging) to the place You obtained them, along with your receipt, for a full refund.

Grant of Limited Non-Exclusive License. This Agreement permits You to use one (1) copy of the software program(s) (the "SOFTWARE") included in this package for your personal use on a single home or portable computer. The SOFTWARE is in "use" on a computer when it is loaded into temporary memory (i.e., RAM) or installed into the permanent memory (e.g., hard disk, CD-ROM, or other storage device) of that computer. Installation on a network server is strictly prohibited, except under a special and separate network license obtained from Owner; this Agreement shall not serve as such necessary special network license. Installation on a network server constitutes "use" that must comply with the terms of this Agreement. This license is not a sale of the original SOFTWARE or any copy thereof.

Intellectual Property Ownership. Owner retains all right, title and interest to this SOFTWARE and the accompanying manual(s), packaging and other written materials (collectively, the "ACCOMPANYING MATERIALS"), including, but not limited to, all copyrights, trademarks, trade secrets, trade names, proprietary rights, patents, titles, computer codes, audiovisual effects, themes, characters, character names, stories, dialog, settings, artwork, sounds effects, musical works, and moral rights. The SOFTWARE and ACCOMPANYING MATERIALS are protected by United States copyright law and applicable copyright laws and treaties throughout the World. All rights are reserved. The SOFTWARE and ACCOMPANYING MATERIALS may not be copied or reproduced in any manner or medium, in whole or in part, without prior written consent from Owner. Any persons copying or reproducing all or any portion of the SOFTWARE or ACCOMPANYING MATERIALS, in any manner or medium, will be wilfully violating the copyright laws and may be subject to civil or criminal penalties.

SOFTWARE Backup or Archiving. After You install the SOFTWARE into the permanent memory of a computer, You may keep and use the original disk(s) and/or CD-ROM (the "Storage Media") only for backup or archival purposes.

Restrictions. Other than as provided specifically in this Agreement, You are not permitted to copy or otherwise reproduce the SOFTWARE or ACCOMPANYING MATERIALS; modify or prepare derivative copies based on the SOFTWARE or ACCOMPANYING MATERIALS; distribute copies of the SOFTWARE or ACCOMPANYING MATERIALS by sale or other transfer of ownership; rent, lease, or lend the SOFTWARE or ACCOMPANYING MATERIALS; or to display the SOFTWARE or ACCOMPANYING MATERIALS publicly. You are expressly prohibited from transmitting the SOFTWARE or ACCOMPANYING MATERIALS electronically or otherwise over the Internet or through any other media or to any other party. You are expressly prohibited from selling or using any characters or other components of the game for any purpose. You are expressly prohibited from selling or otherwise profiting from any levels, add-on packs, sequels or other items based upon or related to the SOFTWARE and ACCOMPANYING MATERIALS or created by utilization of the SOFTWARE's level editor. If you create levels, add-on packs, sequels or other items to the Software using the SOFTWARE's level editor, including the construction of new levels (collectively, the "Modifications"), you are subject to the following restrictions: (i) the SOFTWARE's level editor and associated development tools and documentation (collectively "SDK") are considered separate from the SOFTWARE in the sense that they are not guaranteed or supported by the OWNER. However, the OWNER retains all copyrights and intellectual rights to the SDK, as stated in this license. (ii) your Modifications must require a full, registered copy of the Software to run; (iii) you may not distribute a Modification that contains an executable file which has been changed or modified in any way; (iv) your Modifications must not contain any libelous, defamatory or other illegal material, material that is scandalous or invades the rights of privacy or publicity of any third party, or contain any trademarks, copyright-protected work or other property of third parties; (v) your Modifications must be distributed solely for free. Neither you nor any other person or party may sell them to anyone, commercially exploit them in any way, or charge anyone for using them without a license from the OWNER. OWNER encourages noncommercial distribution of quality Modifications. If you desire to commercially distribute your Modifications, please contact OWNER at the address below for the terms and conditions under which the Modifications may be commercially distributed; (vi) your Modifications shall not be supported by the OWNER. The prohibitions and restrictions in this Section apply to anyone in possession of the Software or any of your Modifications. YOU ARE NOT PERMITTED TO REVERSE ENGINEER, DECOMPILE OR DISASSEMBLE THE SOFTWARE IN ANY WAY. Any copying of the SOFTWARE or ACCOMPANYING MATERIALS not specifically allowed in this Agreement is a violation of this Agreement.

LIMITED WARRANTY AND WARRANTY DISCLAIMERS

LIMITED WARRANTY. Owner warrants that the original Storage Media holding the SOFTWARE is free from defects in materials and workmanship under normal use and service for a period of ninety (90) days from the date of purchase as evidenced by Your receipt. If for any reason You find defects in the Storage Media, or if you are unable to install the SOFTWARE on your home or portable computer, You may return the SOFTWARE and all ACCOMPANYING MATERIALS to the place You obtained it for a full refund. This limited warranty does not apply if You have damaged the SOFTWARE by accident or abuse.

CUSTOMER'S REMEDY. Your exclusive remedies, and the entire liability of Owner, shall be (i) replacement of any original Storage Media with the SOFTWARE or (ii) full refund of the price paid for this SOFTWARE. By opening the sealed software packaging, installing and/or otherwise using the SOFTWARE or ACCOMPANYING MATERIALS, you hereby agree to waive any and all other remedies you may have at law or in equity. Any such remedies you may not waive as a matter of public policy, you hereby assign, or shall assign as they become available, over to Owner.

WARRANTY DISCLAIMERS. EXCEPT FOR THE EXPRESS LIMITED WARRANTY SET FORTH ABOVE, OWNER MAKES NO WARRANTIES, EXPRESS OR IMPLIED, ORAL OR WRITTEN, CONCERNING THE PRODUCTS OR ANY COMPONENT PART THEREOF ANY IMPLIED WARRANTIES THAT MAY BE IMPOSED BY APPLICABLE LAW ARE LIMITED IN ALL RESPECTS TO THE FULLEST EXTENT ALLOWED AND TO THE DURATION OF THE LIMITED WARRANTY. OWNER DOES NOT REPRESENT, WARRANT OR GUARANTEE THE QUALITY OR THE PERFORMANCE OF THE SOFTWARE OR ACCOMPANYING MATERIALS OTHER THAN AS SET FORTH IN THE ABOVE LIMITED WARRANTY. OWNER ALSO DOES NOT REPRESENT, WARRANT OR GUARANTEE THAT THE SOFTWARE OR ACCOMPANYING MATERIALS' CAPABILITIES WILL MEET YOUR NEEDS OR THAT THE SOFTWARE

WILL CONTINUOUSLY OPERATE, BE ERROR FREE, OR THAT PROBLEMS WILL BE CORRECTED. OWNER DOES NOT REPRESENT THAT THE SOFTWARE WILL OPERATE IN A MULTI-USER ENVIRONMENT NO ORAL OR WRITTEN INFORMATION OR ADVICE GIVEN BY OWNER, ITS DEALERS, DISTRIBUTORS, DIRECTORS, OFFICERS, EMPLOYEES, AGENTS, CONTRACTORS OR AFFILIATES SHALL CREATE ANY OTHER WARRANTY OR EXTEND OR EXPAND THE SCOPE OF THIS WARRANTY. YOU MAY NOT RELY ON ANY SUCH INFORMATION OR ADVICE. SOME TERRITORIES DO NOT ALLOW LIMITATIONS ON HOW LONG AN IMPLIED WARRANTY LASTS, SO THE ABOVE LIMITATION MAY NOT APPLY TO YOU. THIS LIMITED WARRANTY GIVES YOU SPECIFIC LEGAL RIGHTS AND YOU MAY ALSO HAVE OTHER RIGHTS WHICH MAY VARY FROM TERRITORY TO TERRITORY.

LIABILITY LIMITATION. To the maximum extent permitted by applicable law, and regardless of whether any remedy set forth herein fails of its essential purpose, IN NO EVENT WILL OWNER, ITS DIRECTORS, OFFICERS, EMPLOYEES, AGENTS OR AFFILIATES NOR ANYONE ELSE INVOLVED IN THE DEVELOPMENT, MANUFACTURE OR DISTRIBUTION OF THE SOFTWARE OR THE ACCOMPANYING MATERIALS BE LIABLE FOR ANY DAMAGES WHATSOEVER, INCLUDING WITHOUT LIMITATION, DIRECT OR INDIRECT, INCIDENTAL, OR CONSEQUENTIAL DAMAGES FOR PERSONAL INJURY, PERSONAL PROPERTY, LOSS OF BUSINESS PROFITS, BUSINESS INTERRUPTION, LOSS OF BUSINESS INFORMATION, LOSS OF TEXT OR DATA STORED IN OR USED WITH THE SOFTWARE INCLUDING THE COST OF RECOVERING OR REPRODUCING THE TEXT OR DATA, OR ANY OTHER PECUNIARY LOSS, ARISING FROM OR OUT OF THE USE OR INABILITY TO USE THIS SOFTWARE. THIS LIABILITY LIMITATION APPLIES EVEN IF YOU OR ANYONE ELSE HAS ADVISED OWNER OR ANY OF ITS AUTHORIZED REPRESENTATIVES OF THE POSSIBILITY OF SUCH DAMAGES. EVEN IF SUCH IS CAUSED BY, ARISES OUT OF OR RESULTS FROM THE ORDINARY, STRICT, SOLE OR CONTRIBUTORY NEGLIGENCE OF OWNER OR ITS DIRECTORS, OFFICERS, EMPLOYEES, AGENTS, CONTRACTORS OR AFFILIATES. SOME TERRITORIES DO NOT ALLOW THE EXCLUSION OR LIMITATION OF INCIDENTAL OR CONSEQUENTIAL DAMAGES, SO THE ABOVE LIMITATION OR EXCLUSION MAY NOT APPLY TO YOU.

PRODUCT SUPPORT AND UPDATES

This SOFTWARE is intended to be user-friendly and limited product support is provided by Owner as specified in the ACCOMPANYING MATERIALS.

JURISDICTION. TEXAS LAWS GOVERN THIS AGREEMENT, REGARDLESS OF EACH STATE'S CHOICE OF LAW PRINCIPLES, WITH A FORUM AND VENUE OF DALLAS COUNTY, TEXAS. This Agreement may be modified only by a written instrument specifying the modification and executed by both parties. In the event that any provision of this Agreement shall be held to be unenforceable, such provision shall be enforced to the greatest possible extent, with the other provisions of this Agreement to remain in full force and effect.

ENTIRE AGREEMENT. This Agreement represents the entire agreement between the parties, and supersedes any oral or written communications, proposals or prior agreements between the parties or any dealers, distributors, agents or employees.

TERMINATION. This Agreement is valid until terminated.

This Agreement ceases automatically (without any form of notice) if You do not comply with any Agreement provision. You can also end this Agreement by destroying the SOFTWARE and ACCOMPANYING MATERIALS and all copies and reproductions of the SOFTWARE and ACCOMPANYING MATERIALS and deleting and permanently purging the SOFTWARE from any client server or computer on which it has been installed. Program Transfer. You may permanently transfer all of your rights under this Agreement, provided that the recipient agrees to all of the terms of this Agreement, and You agree to transfer all ACCOMPANYING MATERIALS and related documents and components and remove the SOFTWARE from Your computer prior. Transferring the SOFTWARE automatically terminates Your license under this Agreement. Equitable Remedies You hereby agree that if the terms of this Agreement are not specifically enforced, Owner will be irreparably damaged, and therefore you agree that Owner shall be entitled, without bond, other security, proof of damages, to appropriate equitable remedies with respect any of this Agreement, in addition to any other available remedies.

OWNER. If You have any questions regarding this Agreement, the enclosed materials, or otherwise, please contact in writing:

Take 2 Interactive
Saxon House
2-4 Victoria Street
Windsor
Berkshire
SL4 1EN

© 2004 Illusion Softworks. Illusion Softworks, the Illusion Softworks logo and Hidden and Dangerous are trademarks of Illusion Softworks. Global Star, the Global Star logo, Take-Two Interactive Software and A Take2 Company logo are all trademarks and/or registered trademarks of Take-Two Interactive Software. Product names are the trademarks of their respective owners, and not of Global Star, and are included for entertainment purposes only. No product, person or establishment appearing or mentioned in this game has endorsed this game or any of the actions described or displayed herein or is in any way associated with Global Star. All other marks and trademarks are the property of their respective owners. Uses Bink Video. Copyright © 1997-2004 by RAD Game Tools, Inc. GameSpy and the "Powered by GameSpy" design are trademarks of GameSpy Industries, Inc. Product of United Kingdom. Developed by Illusion Softworks. Published by Global Star. All rights reserved.

Notes

Notes

Notes